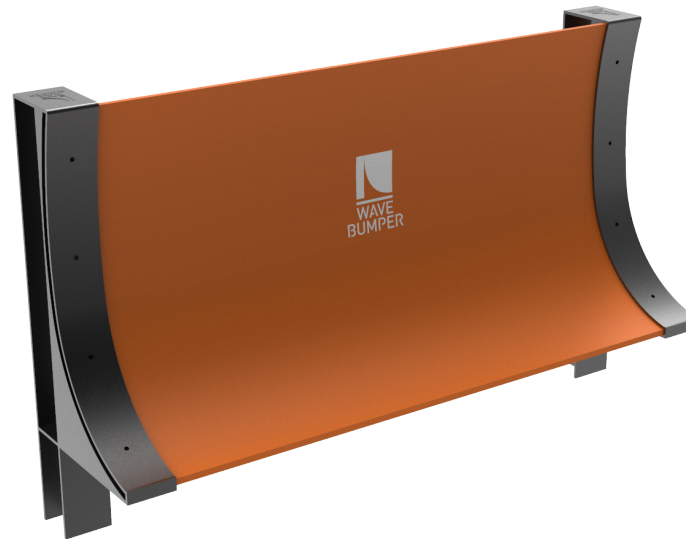


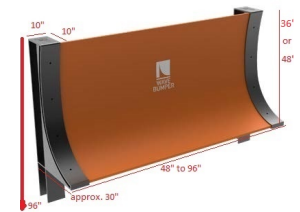
PRODUCT FILE

FENCEBLADE®



FENCEBLADE®

INNOVATION AGAINST MARINE SUBMERSION



PRESENTATION

FENCEBLADE® is a unique coastal flooding system. Its originality is found in its patented curve. Made of composite materials, it resists and reduces the destructive impact of submersion waves. This system rejects the energy of the waves by generating a return movement towards the ocean.

This removable “coastal wall” solution includes a patented curved composite panel and curved stainless steel posts in which the panel slides easily in. Basis of the posts can be inserted or cemented to the ground foundation. Holes on both edges of the panel enable users to quickly & safely secure it inside the posts by aligning them with the holes of the poles. Removable, light and re-usable, it respects the ecology of the site where it is deployed.

TECHNICAL CHARACTERISTICS

Dimensions (in) (l x h x d)	Fence: 48" to 96" x 36" or 48" x approx. 30" Post: 72" or 96" x 10" x 10" x approx. 30"
Net Weight (lbs/sqft)	Fence: 4.97 w/o post
Color	Post : steel Fence: ● Orange / ● Sand / ○ Choice of colors
Material	Fence: fiberglass & resin Post: stainless steel

PRODUCT FEATURES

- Patented curved coastal fence which absorbs and returns wave energy
- Composite material structure & stainless steel poles
- Removable panel
- Resistant to impacts from floating debris
- Simple and quick installation of panel
- A low ground surface footprint
- Easy storage (stackable elements)
- Possible customization (color, slogan, logo, etc.)

WAVE BUMPER

9 rue Pierre Georges Latécoère
64100 BAYONNE -FRANCE
Tél. +33 5 64 11 54 31
contact@wave-bumper.com
www.wave-bumper.com



by **accessrec®**

ACCESSREC LLC

55 Park Slope
Clifton, NJ 07011- USA
Phone.+1 973-955-0514
sales@AccessRec.com
www.accessrec.com