



**Mustmove**<sup>®</sup>

---

**by accessrec**<sup>®</sup>

# Mobility Matting & Ground Protection Solutions

[www.mustmove.accessrec.com](http://www.mustmove.accessrec.com)

# ***COMMITTED TO MOBILITY***

## **SOLUTIONS DEIGNED FOR MOBILITY**

Lightweight for quick deployment by hand, versatile, and durable for multi-purpose applications, Mustmove Solutions are developed with mobility requirements in mind. They are an essential asset in ever-changing environments where Mobility are priority challenges.



# Our Solutions

---



## HELIPAD

Pg: 3



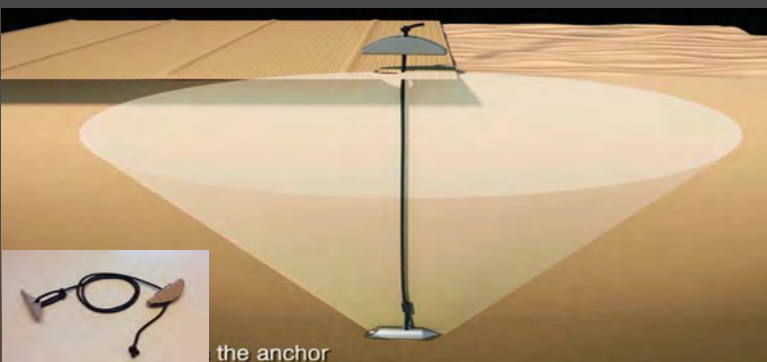
## TRACKWAY BEACH ACCESS

Pg: 5



## VEHICLE RECOVERY SYSTEM

Pg: 7



## QS ANCHORING

Pg: 9

# HELIPAD

**Mustmove® Helipads** are innovative helicopter landing zones which provide a quick installation of a safe landing zone. They support any type of helicopter and rotary wing UAV.

Mustmove® Helicopter Landing Mats are made of a double-ply rubber coated fabric reinforced with integrated high-strength tensile composite rods.



## ADVANTAGES

- Ultra-compact, each roll is only 9 inch in diam.
- Foldable (roll up) and light weight
- Man-handable
- Easy to install, remove & clean
- Perforation resistant
- High visibility with cross markings every 16 ft.
- 100% impermeable to dust and mud
- Anti-sliding surface pattern
- Repairable
- Higher life expectancy
- Customizable (colors, sizes, markings...)
- Night Detection Beacons (Mustmove® NDB)





# SPECIFICATIONS

Product	Kit P/N	Size ft.	Rolls size ft.	No. Rolls	No. Racks	No. QS Anchor Kits	Kit Weight lbs. (lbs/sqft)	No. kit in 20' ISO/CT
Mustmove® Helipad	MMOHACNRR19001	65' x 65'	9.6' x 32.8'	14	1	3	2,248 (0.53)	8
Mustmove® Helipad	MMOHACNRR19002	94.1' x 97.6'	9.6' x 32.8'	30	2	5	4,717 (0.51)	4
Mustmove® Helipad	MMOHACNRR19003	131' x 130'	9.6' x 32.8'	56	4	8	8,818 (0.51)	2
Mustmove® Helipad	MMOHACNRR19004	160' x 162'	9.6' x 32.8'	85	6	12	13,360 (0.51)	1



HELIPAD

# TRACKWAY & BEACH ACCESS

**Mustmove® Trackway & Beach Access** Mat is an innovative ground improvement and protection solution developed to increase mobility on sand, mud, and unstable grounds.

This unique roll-out matting system is ideal to quickly deploy vehicular access routes, boat launching ramps, aircraft recovery up to C130 aircrafts and for pedestrian/soldiers pathways and tent flooring.

Mustmove® Trackway & Beach Access Mats are made of double-ply, rubber coated fabrics, reinforced with composite rods.



## ADVANTAGES

- Very compact, only 9 to 18 inches when rolled up
- Manually-handable
- Easy to install remove & clean
- Does not float on water
- Impermeable to sand
- Foldable (Roll up) & light weight
- Anti-sliding rubber coated surface
- Easy to clean & remove
- Modular design: sections with quick connections
- Rotating sections
- Perforation resistant
- Repairable
- Longer life expectancy
- Can be fitted to all existing deployment systems

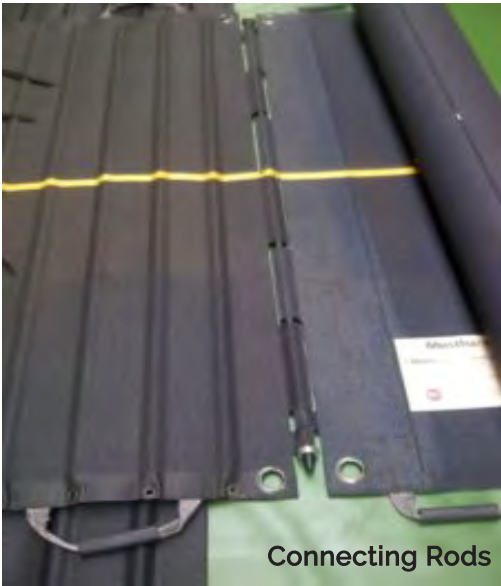




SPECIFICATIONS

Mustmove® Trackway & Beach Access exceeds the performances of metal, woven polyester or plastic mats.

Product	Kit P/N	No. Rolls	Roll Ø inch.	Weight lbs. (lbs/sqft)	Roll Dimensions	
					Width ft	Length ft
Mustmove® Trackway & Beach Access Light Duty	MMOSACNRR19001	1	9	143 (0.45)	9.5	32.8
Mustmove® Trackway & Beach Access Medium Duty	MMOSACNRR19002	1	9	143 (0.45)	9.5	32.8
Mustmove® Trackway & Beach Access Heavy Duty	MMOSACNRR19003	1	18	286 (0.90)	9.5	32.8



Connecting Rods

# VEHICLE RECOVERY SYSTEM (VRS)

**Mustmove® Vehicle Recovery System** is an innovative capability for recovering any vehicles from mud, and unstable ground conditions.

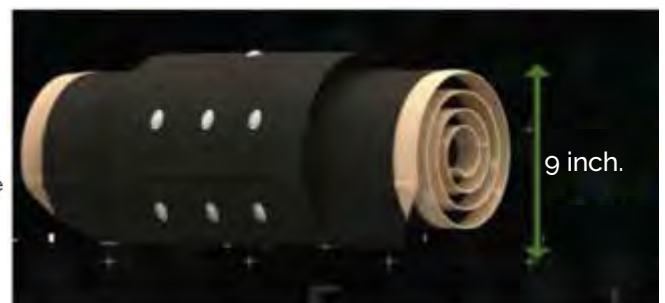
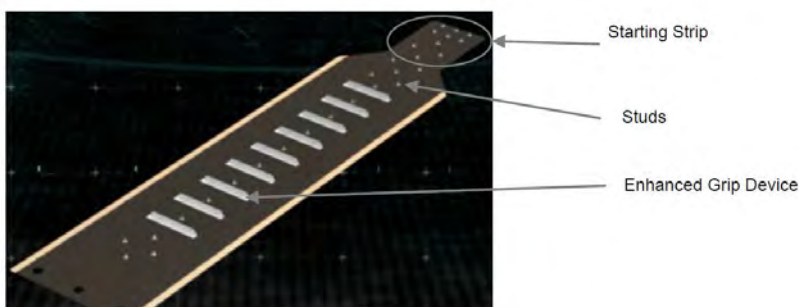
**Mustmove® VRS** roll-out mats are made of high resistance material, coated with special polymer and reinforced with composite rods.

They contain anti-sliding studs for enhanced grip and performance in extreme situations.



## ADVANTAGES

- Very compact, only 9 inches diam. when rolled up.
- Starting strip for easy & quick positioning under the wheels.
- Impermeable, mud, or sand do not stick to the mat.
- Anti-sliding surface pattern.
- Safer recovery operation with QS anchors.
- NO risk of damaging tires with metallic parts, anchoring stakes.





# SPECIFICATIONS

Product	Kit P/N	No. Rolls	Roll Ø inch.	Weight lbs. (lbs/sqft)	Roll Dimensions	
					Width ft	Length ft
Mustmove® Vehicle Recovery System Light Duty vehicles < 4t	MMODACNRR19001	2	9	19 (2.92)	1.3	5
Mustmove® Vehicle Recovery System Medium Duty vehicles < 13t	MMODACNRR19002	2	9	33 (2.98)	1.7	6.5
Mustmove® Vehicle Recovery System Heavy Duty vehicles > 13t	MMODACNRR19003	2	9	37 (1.85)	2.5	8

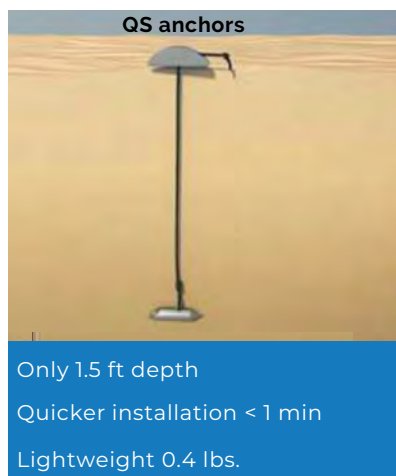
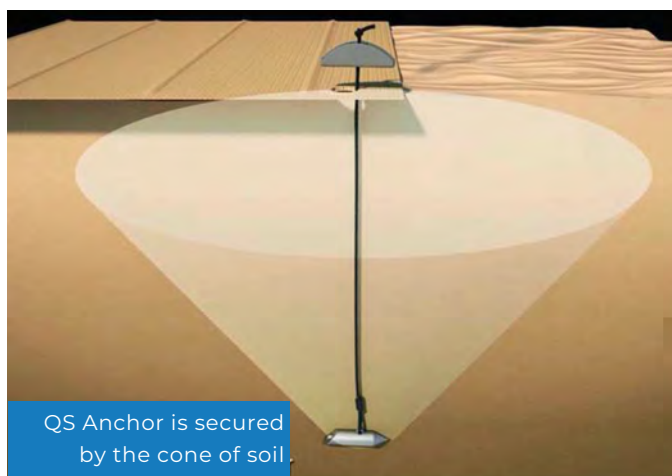


# QS ANCHORING

**Mustmove® QS Anchoring Systems** are an innovative solution for **Quick** and **Safe** anchoring on soft grounds.

Mustmove® QS are offered with every Mustmove kit for outstanding anchoring.

QS Anchoring systems are comprised of an aluminum anchor, a flexible link made of high tenacity technical textile, and an original Tensioning & Locking device.



## ADVANTAGES

- **Quicker:** Installation and removal in less than 1 min.
- **Safer:** Same performance as traditional stakes at only 1.5 ft depth. Removable only with QS special tool.
- **Lightweight:** 0.4 lbs.
- **Compact:** 100 QS anchors packed in 1 bag (17"x20") and 44 lbs.
- **Adjustable:** Unlike traditional stakes, QS anchor adapts to undulating and uneven surfaces.

## SPECIFICATIONS

Product	Kit P/N	No. Units	Weight lbs.	Dimensions	
				Width inch.	Length inch.
Mustmove® QS Anchoring Systems Bag of 100	MMOACNRR19001	100	44	17	20

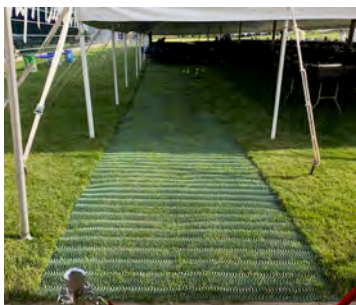
Flexible link: Technical fabric with a **500 daN** mechanical strength.

Tensioning & Locking device: in aluminum, used to load-lock the anchor after insertion and for adjusting the length of the flexible link and maintaining it under tension.

## ACCESSREC ALSO OFFERS

Roll-out Accessibility Mats • HDPE Ground Mats • Coastal Surge & Flood Protection

[www.AccessRec.com](http://www.AccessRec.com)



# Contract Holder

Contract # 47QSWA20D005C



## **ACCESSREC, LLC - US HEADQUARTER**

55 Park Slope Clifton, New Jersey 07011 USA

Office: +1 973-955-0514 - Fax: +1 201-624-7007

**Email:** [sales@AccessRec.com](mailto:sales@AccessRec.com)

**Web:** [www.Mustmove.AccessRec.com](http://www.Mustmove.AccessRec.com) - [www.AccessRec.com](http://www.AccessRec.com)